

est 1979



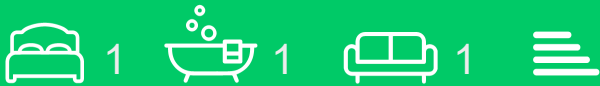
1., Flat 3, 101 Nether Street, North Finchley, N12 7NP

£325,000

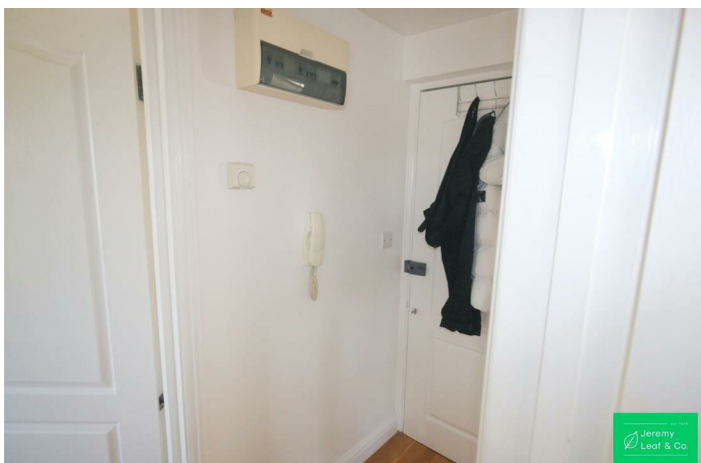
- Bathroom
- Top Floor Conversion
- Reception Room
- New lease to be granted with Share of Freehold
- Kitchen
- 0.5 miles to Woodside Park Tube Station (Northern Line)
- One Bedroom

Flat 3, 101 Nether Street, North Finchley N12 7NP

A well-presented flat on the top floor of a conversion, comprising a reception room, kitchen, double bedroom and bathroom. Located 0.5 miles of Woodside Park (Northern Line) tube station, this property would make a good first time buy or rental investment. Currently rental income of £1,160pcm. For more information please click on the link for the virtual tour.

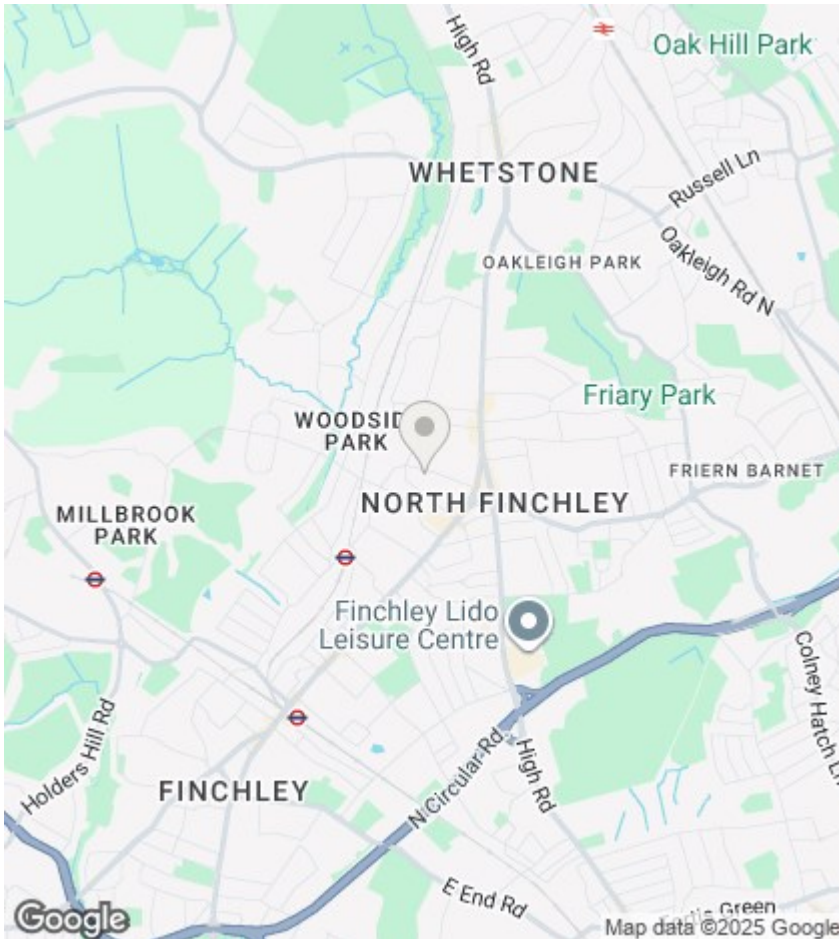


Council Tax Band: C



Full Description

A well-presented flat on the top floor of a conversion, comprising a reception room, kitchen, double bedroom and bathroom. Located 0.5miles of Woodside Park (Northern Line) tube station, this property would make a good first time buy or rental investment. Currently rental income of £1,160pcm. For more information please click on the link for the virtual tour.



Directions

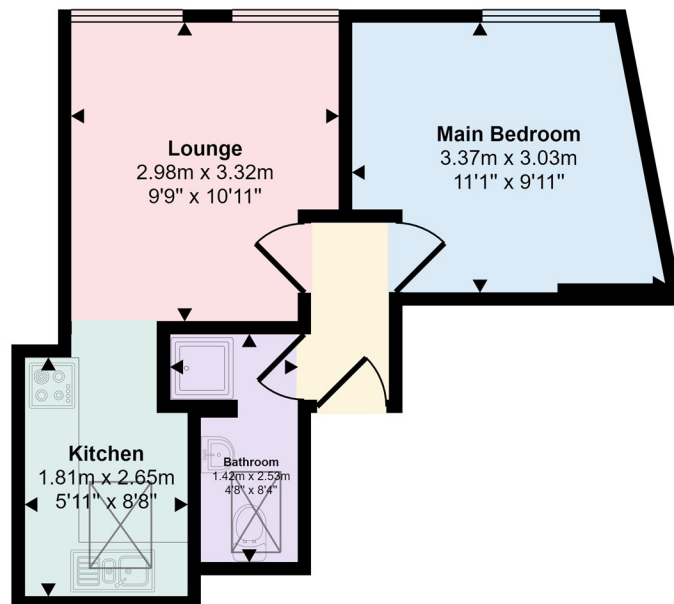
Viewings

Viewings by arrangement only. Call 020 8446 4295 to make an appointment.

EPC Rating:

Energy Efficiency Rating		
	Current	Potential
Very energy efficient - lower running costs		
(92 plus) A		
(81-91) B		
(69-80) C		
(55-68) D		
(39-54) E		
(21-38) F		
(1-20) G		
Not energy efficient - higher running costs		
England & Wales	EU Directive 2002/91/EC	

Approx Gross Internal Area
30 sq m / 318 sq ft



Floorplan

This floorplan is only for illustrative purposes and is not to scale. Measurements of rooms, doors, windows, and any items are approximate and no responsibility is taken for any error, omission or mis-statement. Icons of items such as bathroom suites are representations only and may not look like the real items. Made with Made Snappy 360.